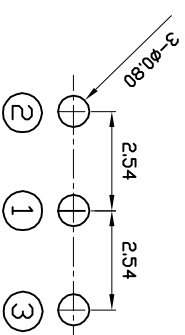
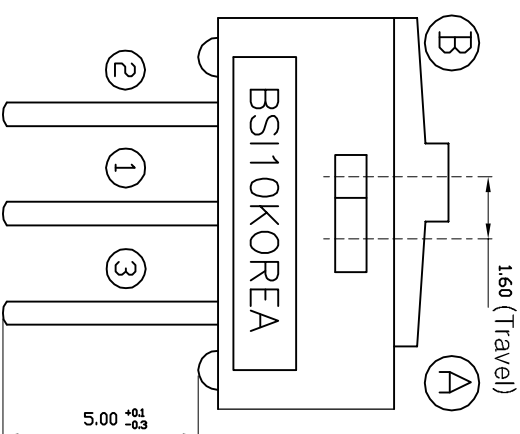
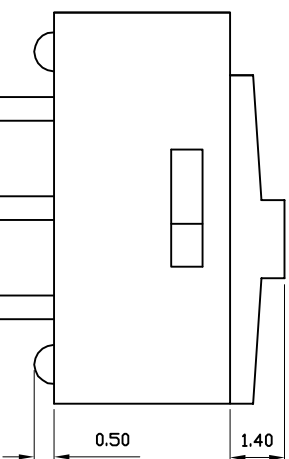
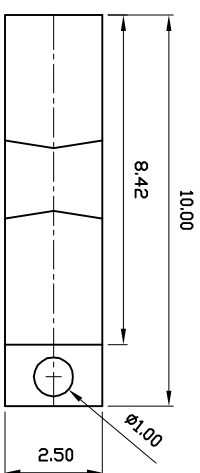
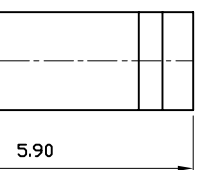


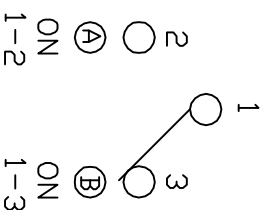
MARK	DATE	REMARKS
△		
△		



P.C.B. DIMENSION

SPECIFICATION

1. Rating : 0.5A, DC 12V~0.3A, DC24V
2. Contact Resistance : 30mΩMax
3. Travel : 1.6mm
4. Operating Force : 800gf Max
5. Life cycle : 1,000 Cycle(with load)



Circuit Diagram

NO.	DWG No.	QTY	MATL	SPEC	FINISH	REMARKS
3ANG	UNIT M/M	SCL	MODEL NAME:	MINI SLIDE SWITCH		
APPD.	CHKD.	DSGD	TITLE	BSI-10		
K.I LEE	J.P ROH	J.S SIN	DRAWG. NO.	Sheet 1 / 2	REV	B
SUNGJUN ELECTRONICS CO.,LTD						

GENERAL SPECIFICATION

MODEL

BSI - 10 Series

1. Electrical Characteristics.

- 1-1. Rating : AC, DC 12V 0.5A~24V 0.3A (Minimum current: 1mA)
- 1-2. Contact Resistance : Max 30mΩ
- 1-3. Insulation Resistance : Min 10,000MΩ, at DC 500V
- 1-4. Withstanding Voltage : 1min at AC 500V

2. Mechanical Characteristics.

- 2-1. Operating Force : 250gf ±150gf
- 2-2. Angle of Lever Throw
- 2-3. Insulator
 - 2-3-1. Case : Glass Fiber Reinforce Polyamide (UL94 V-0)
 - 2-3-2. Slide : Glass Fiber Reinforce Polyamide (UL94 V-0)
- 2-4. Terminal : Nickel(Ni 0.2μm Min) Gold Plate(Au 0.05μm Min)

3. Life Test.

- 3-1. Test Condition : Operations at a rate of 15-20Cycle 1minute
 - 3-1-1. with load : 2,000 Cycles
 - 3-1-2. without load : 50,000 Cycles
- 3-2. Operating Force : With +10%, -40% of Initial Value
- 3-3. Contact Resistance : Max 30mΩ

4. Environmental Characteristics.

- 4-1. Operating Temperature : -40℃ to +85℃
- 4-2. Storage Temperature : -40℃ to +85℃
- 4-3. Humidity Test
 - 4-3-1. Test Conditions : Measured 1Hour After Exposure to Ambient
After 96Hour Exposure at 40±2℃, 90-95%R.H
 - 4-3-2. Insulation Resistance : Min 10,000MΩ, at DC 500V
 - 4-3-3. Withstanding Voltage : 1min at AC 500V
- 4-4. Saline Spray Test : 24 hours

5. Solder Conditions.

- 5-1. Hand solder: 3~4sec. at 380℃
- 5-2. Wave solder: 5sec. at 270℃

SUNGMUN ELECTRONICS CO., LTD.

amec

Langer Acker 32
30900 Wedemark
Germany

(+49) 5130 / 58642-0
info@amec-gmbh.de
www.amec-gmbh.de