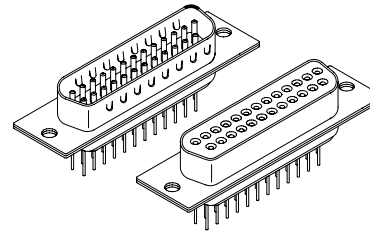


REV.	SPECIFICATION	ECN NO.	APPD.



**Material:**

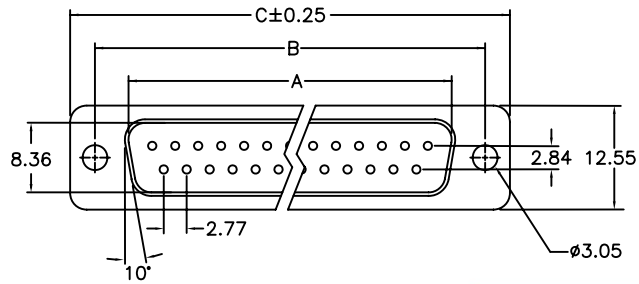
Housing: Thermoplastic Polyester Glass Filled UL94V-0.  
 Contacts: Copper Alloy.  
 Shell: Metal.

**Electrical Characteristics:**

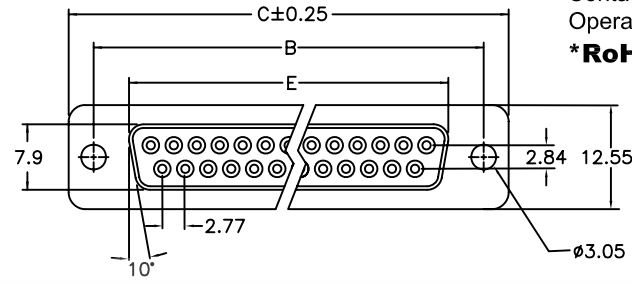
Current Rating: 1 AMP.  
 Dielectric Withstanding Voltage: AC 1000V For 1 minute.  
 Insulator Resistance: 1000M  $\Omega$ min. at DC 500V.  
 Contact Resistance: 20m $\Omega$  max.at DC 100mA.  
 Operating Temperature: -55°C~+105°C.

**\*RoHS Compliant**

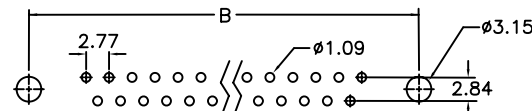
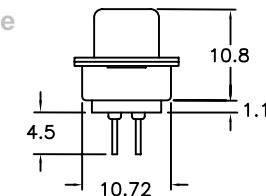
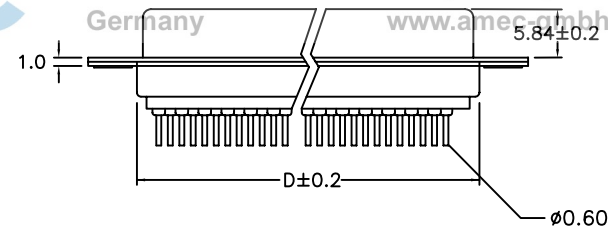
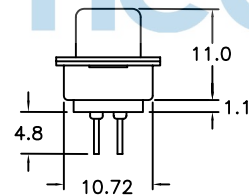
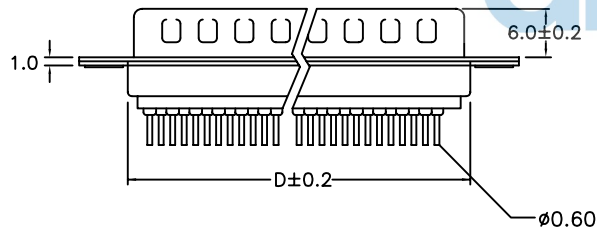
**Male**



**Female**



Langer Acker 32 (+49) 5130 / 58642-0  
 30900 Wedemark info@amec-gmbh.de  
 Germany www.amec-gmbh.de



**P.C. Board Layout**

7905- xx M T B G 00 A  
 Series Position M: Male T: Tin Shell B: Black G: Gold 00: G/F A: Tray  
 F: Female U: Blue Plated Package  
 W: White

Position	Dimension				
	A	B	C	D	E
9	16.92	24.99	30.81	19.28	16.33
15	25.25	33.32	39.14	27.51	24.66
25	38.96	47.04	53.04	41.30	38.38
37	55.42	63.50	69.32	57.71	54.84

Tolerances	Dwg. No.	7905D03001	Title:	7905 Series
x = ±0.5	Projection		D-SUB Straight Type	
.x = ±0.25	Unit	mm	Scale	1:1
.xx = ±0.15	Drawn By	Peggy03/28'13	767	

<b>OUPIIN</b>			
OUPIIN ELECTRONIC(KUNSHAN) CO., LTD.			
P/N: 7905-xxMTBG00A& 7905-xxFTBG00A			
SHEET	1/1	Ver.No.	B2